

#Jenny



Finally I get this ebook, thanks for all these I can get now!

#Rio



Cool! I'am really happy

#Markus Jensen



I did not think that this would work, my best friend showed me this website, and it does! I get my most wanted eBook

#Hun Tsu



wtf this great ebook for free?!

#Che Salsa



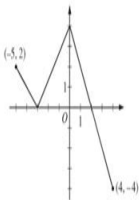
My friends are so mad that they do not know how I have all the high quality ebook which they do not!

#Diego Butler



so many fake sites. this is the first one which worked! Many thanks

No calculator is allowed for these problems.



Graph of  $f$

3. The function  $f$  is defined on the closed interval  $[-5, 4]$ . The graph of  $f$  consists of three line segments and is shown in the figure above. Let  $g$  be the function defined by  $g(x) = \int_{-5}^x f(t) dt$ .

- (a) Find  $g(3)$ .
- (b) On what open intervals contained in  $-5 < x < 4$  is the graph of  $g$  both increasing and concave down? Give a reason for your answer.
- (c) The function  $h$  is defined by  $h(x) = \frac{g(x)}{5x}$ . Find  $h'(3)$ .
- (d) The function  $p$  is defined by  $p(x) = f(x^2 - 3)$ . Find the slope of the line tangent to the graph of  $p$  at the point where  $x = -1$ .

[Download PDF version of :](#)  
**2014 Ap Calculus Ab Multiple Choice Answers**